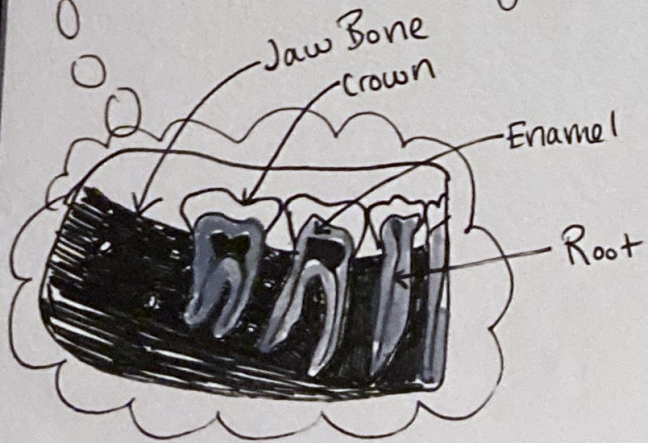




osteoblasts shining on the trees

Osteoclasts raining on the trees



Bone Remodeling has an equilibrium of osteo-blast Mediated bone formation & osteoclast regulated Resorption. Mandible holds lower teeth in place, anchoring the roots, and providing structure.





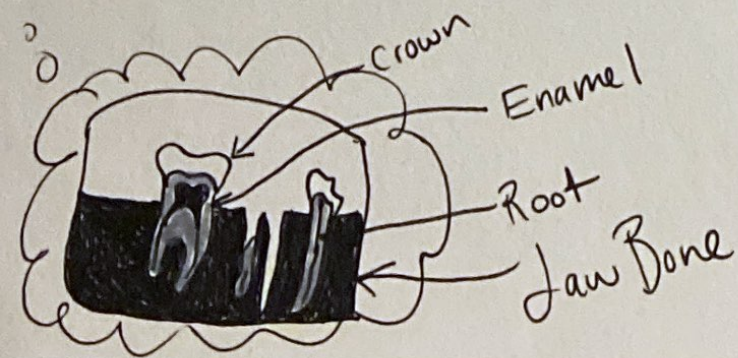
8am - 2pm (6hr)

Osteoblasts shining on the trees

2pm - 8am (18h)

Osteoclasts raining on the trees

Osteoclast mediated bone resorption has begun to work at a greater rate outside of equilibrium in comparison to osteoblast regulated bone formation. Tooth loss has occurred and remaining teeth are weakly anchored into the mandible







8am - 8am (24h)

Osteoclasts raining on soil.

Osteoclast mediated resorption has significantly exceeded osteoblast regulated formation. Complete tooth loss has occurred and the mandible continues to resorb.

