

EMPHYSEMA



AND ITS EFFECT ON THE LUNGS

BY: Rilee White

HEALTHY



EMPHYSEMA



v.s.

This shows the profile of an individual with healthy lungs that expand and contract properly.

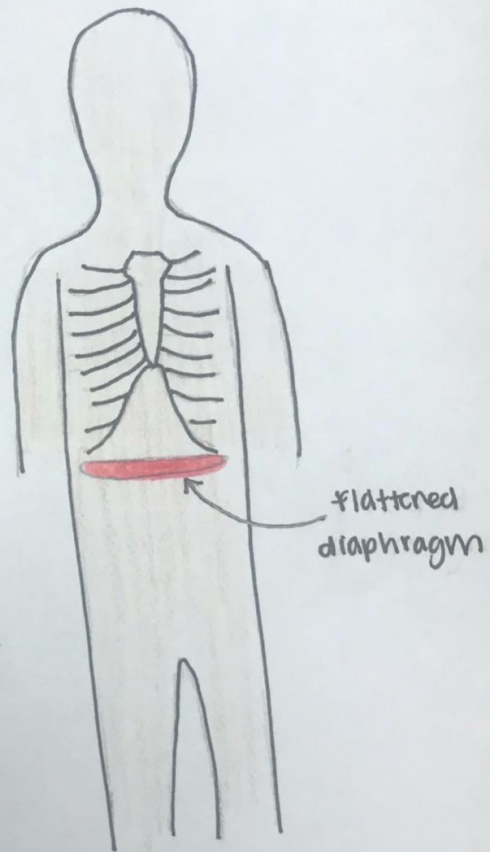
This shows an individual with a "barrel chest". This occurs when air is trapped in the lungs and they are permanently expanded.

HEALTHY



This shows a healthy respiratory system where the diaphragm can relax.

EMPHYSEMA

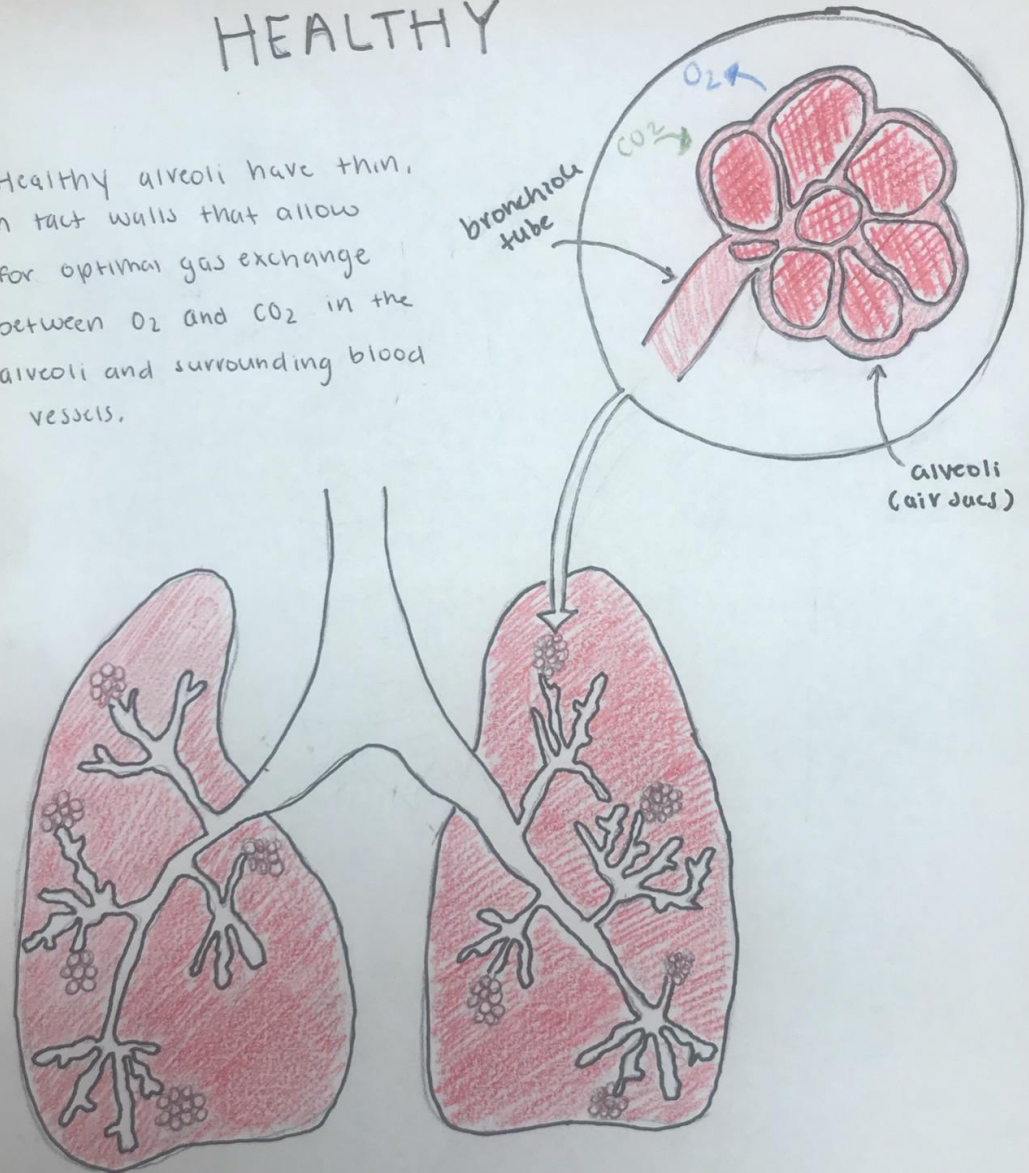


In someone with emphysema, the air is trapped in the lungs, expanding the chest and forcing the diaphragm to flatten.

V.S.

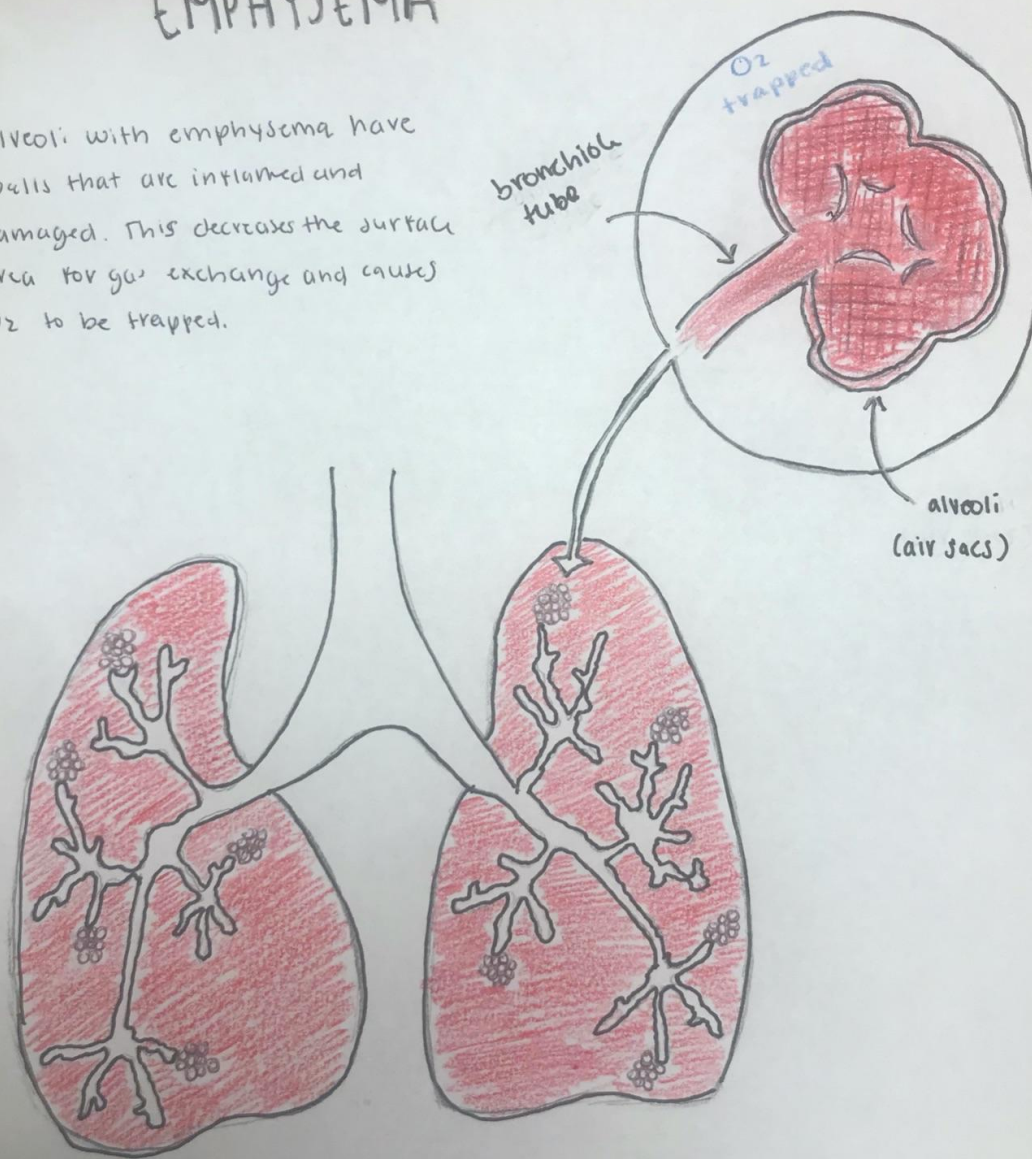
HEALTHY

Healthy alveoli have thin, intact walls that allow for optimal gas exchange between O_2 and CO_2 in the alveoli and surrounding blood vessels.



EMPHYSEMA

Alveoli with emphysema have walls that are inflamed and damaged. This decreases the surface area for gas exchange and causes O₂ to be trapped.



THE
END!