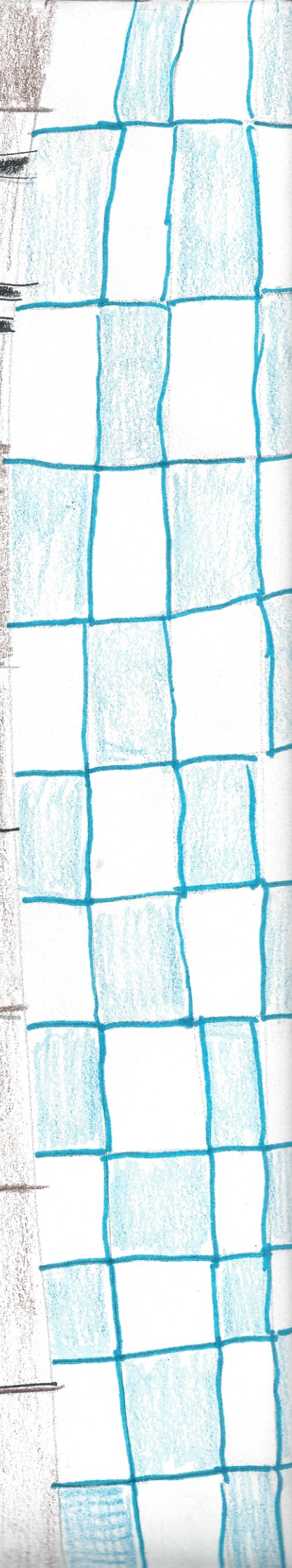
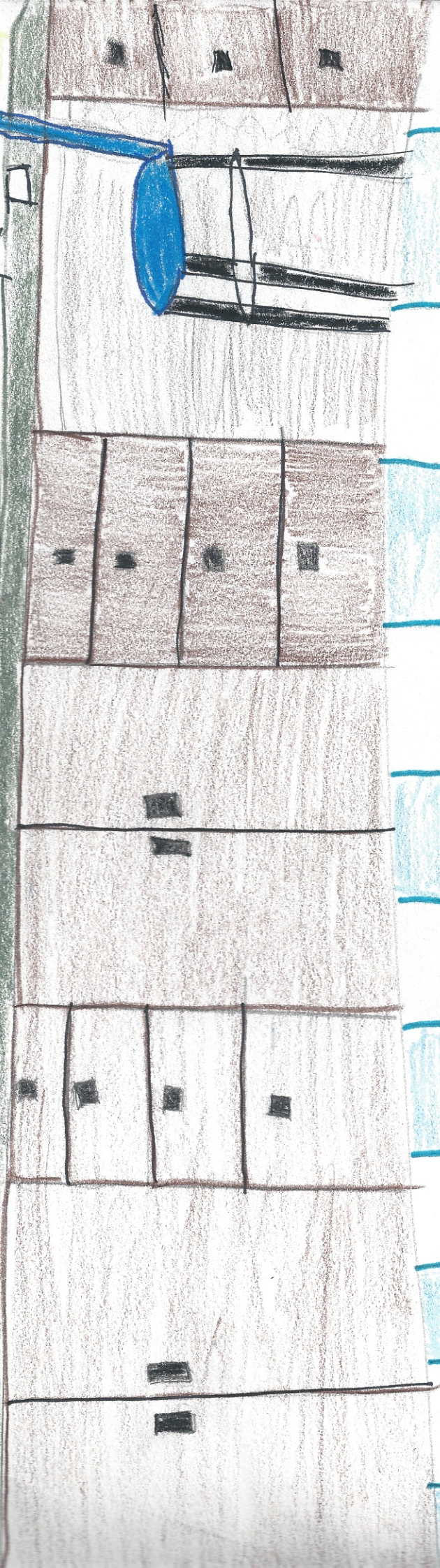
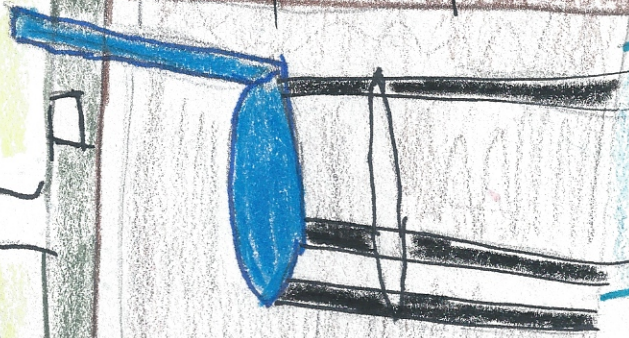
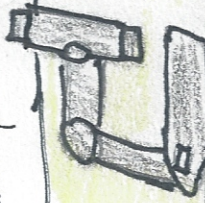
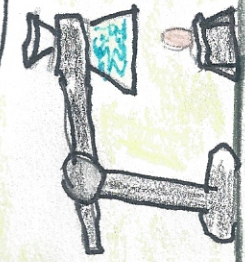


Carcinoid Tumors

Pancreas



Where and in what?

Carcinoid tumors are a rare type of tumor that is usually found in the lungs and digestive system.

Lungs

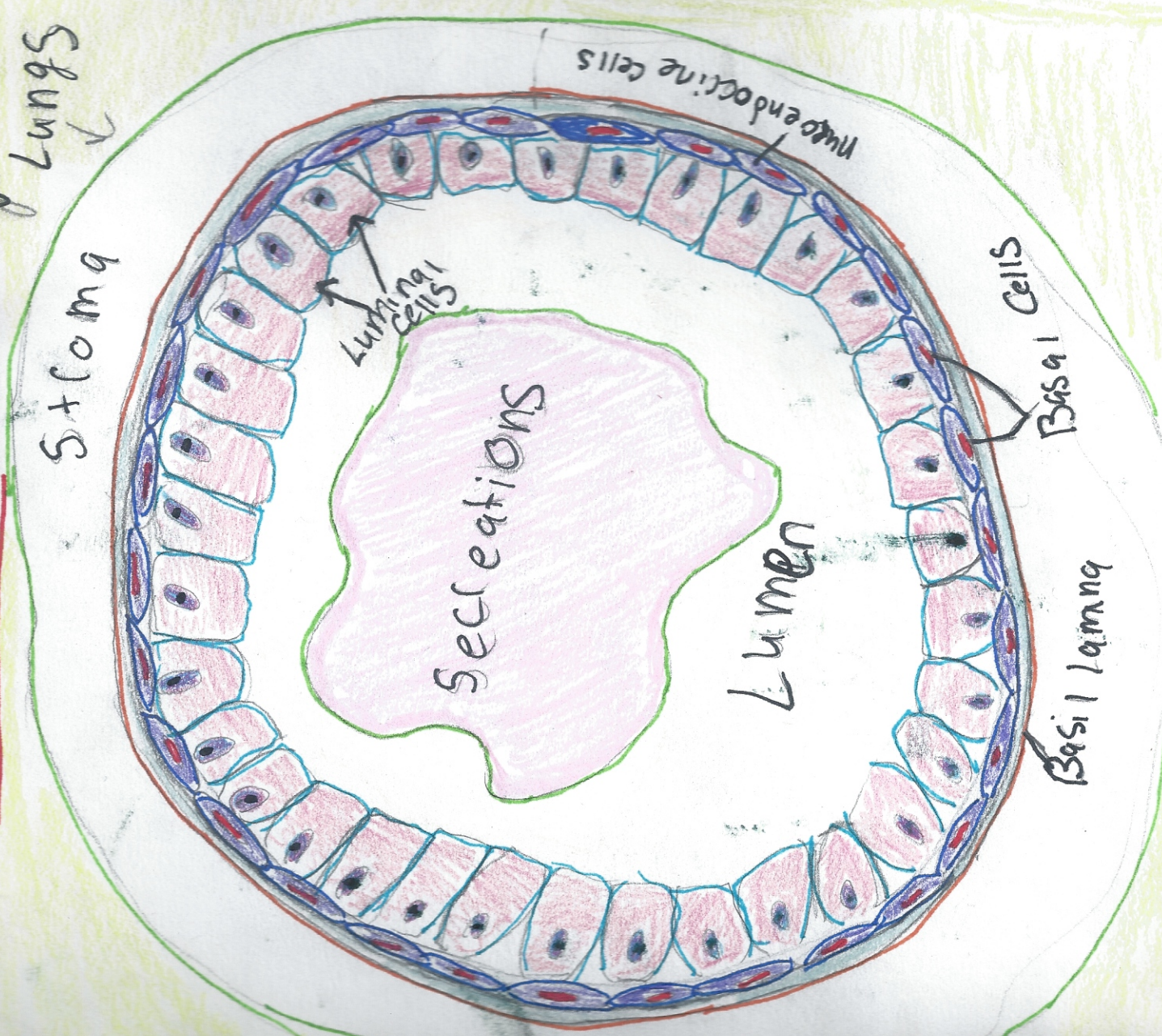
- Lung Carcinoid tumors are uncommon and tend to grow slower than other types of lung cancer.
 - found in 2 places
 - **Central Carcinoids** - are where the 2 main bronchi,
 - **Periportal Carcinoids** - develop in the Bronchies, outer edges of the lungs.
- Types - there are 2 types in the lungs
- Typical** - tend to grow slowly & rarely spread beyond the lungs
- Atypical** - grow faster than typical and more likely to spread to other organs

Digestive

- These types of cancer is found and form in the Stomach, Colon, Small Intestine, Appendix and Rectum.
- Forms in the lining of the gastrointestinal tract.
- These tumors grow very slowly and are very rare



What are they made up of?



Neuroendocrine cells
Lung and GI tract carcinoid tumors stomach and foetus

the neuroendocrine cells. These cells are found in the lungs and abdomen.

Neuroendocrine cells are like both nerve and hormone producing cells.

Function in Lungs
help control air and blood flow in lungs.

help control the growth of other types of lung cells
Detect the levels of oxygen & carbon dioxide that we breathe in and out. Then release chemical messages to help the lungs adjust to the changes

Function in the GI tract

Neuroendocrine cells make hormones that help control digestive juices and the muscles used in moving food through the stomach and intestines. The tumor may also make hormones and release them into the body

Imaging in the
stomach
Lungs

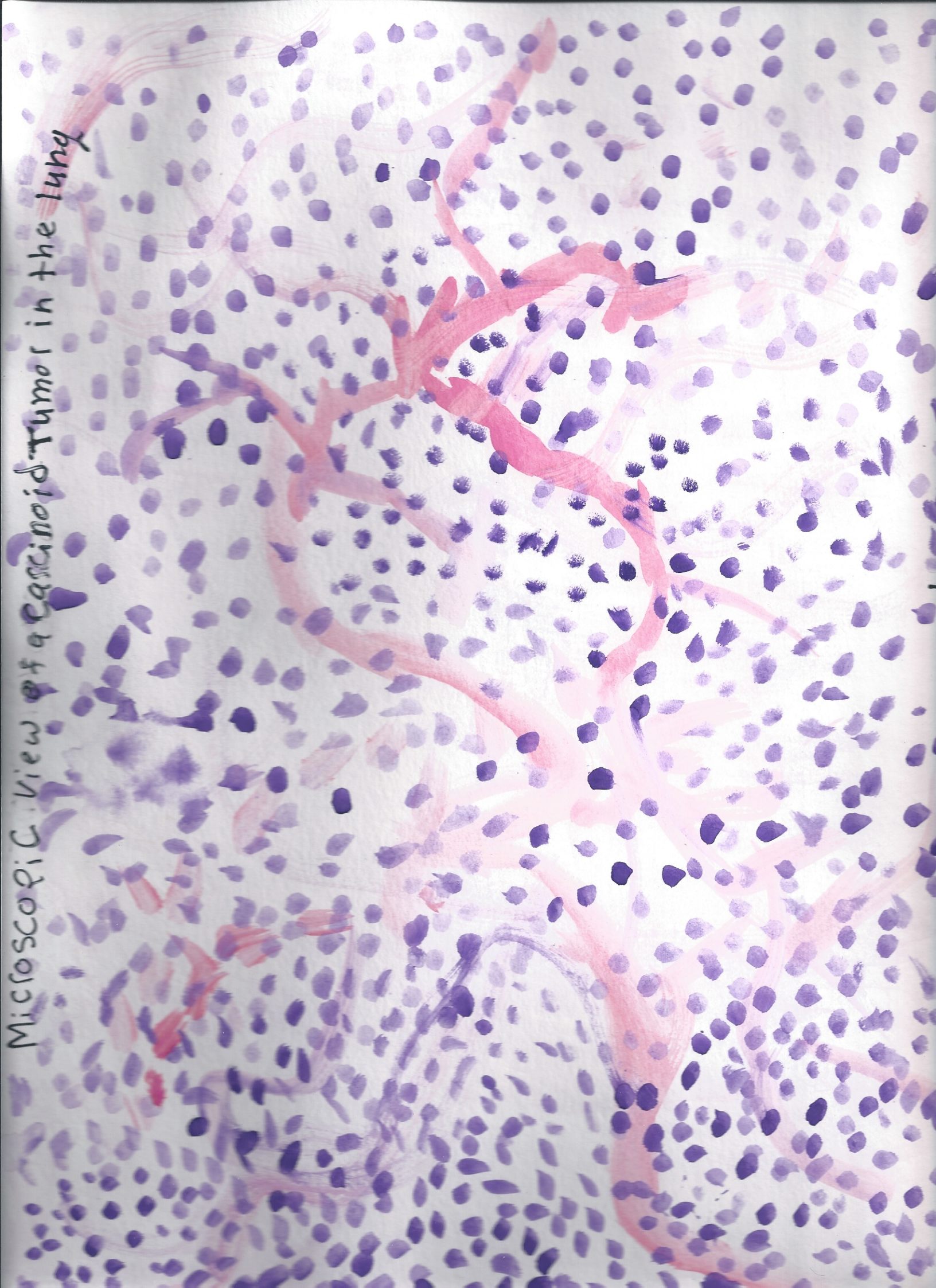


4

Microscopic view of a Cysticercoid Tumour in
GI tract



Microscopic view of a Carcinoid Tumor in the Lung



Treatment

The preferred treatment for carcinoma tumors is **surgery**. But sometimes the tumor may have spread too much so doctors will have to treat the growth, so the alternate solutions are: **Medications** that block the cancer to secrete hormones, and drugs that deliver radiation directly to the cancer cells. Other options are **Ablation**, which shrinks or destroys the tumor, by injecting the tumor directly with a substance that will harm it.

Another option is **chemotherapy** which uses drugs to kill the cancer cells. The drugs though can harm normal cells, which will cause side effects. **Radiation therapy** and **organ transplants** are another option to treating the tumor for more information you can go to the **American Cancer Society** website.

AMERICAN
Cancer
Society

