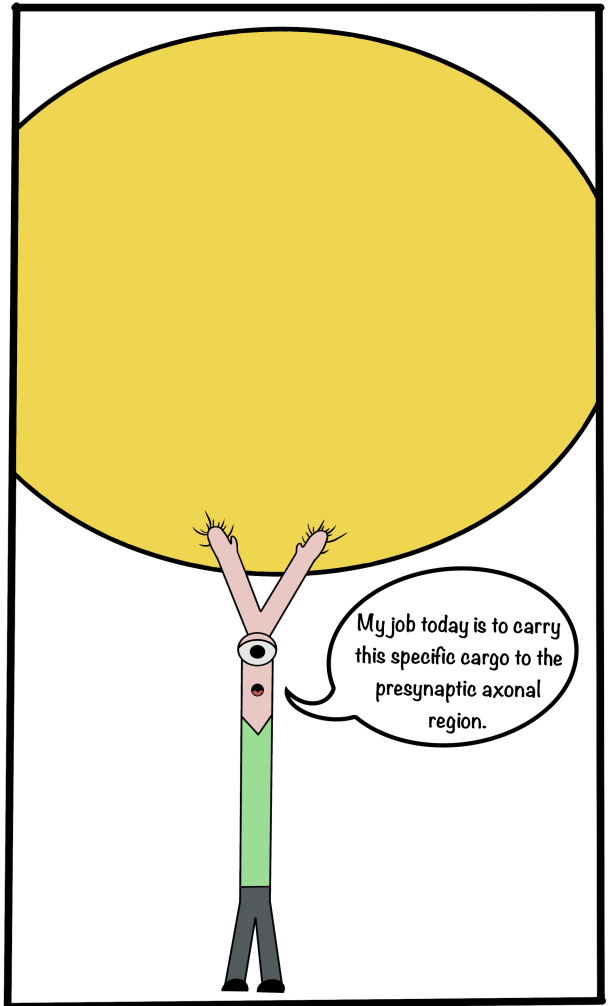
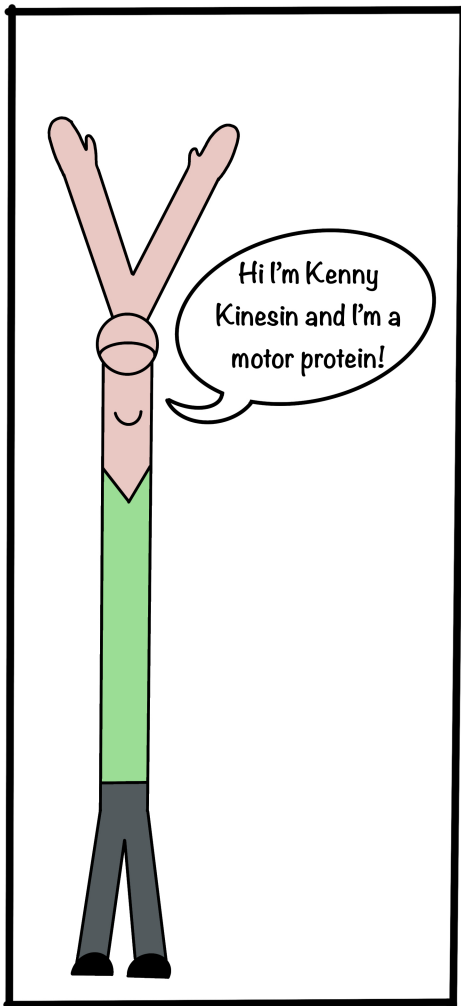
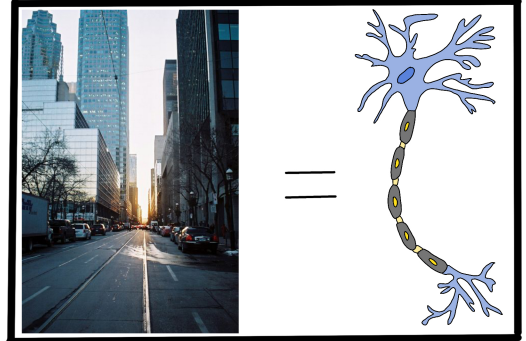
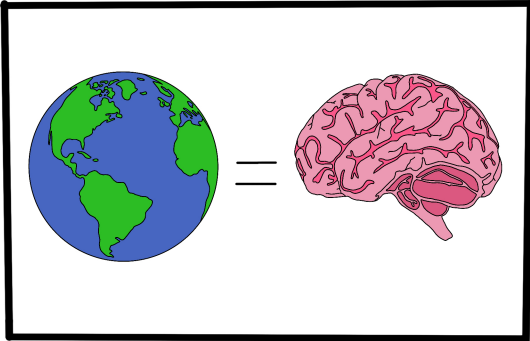
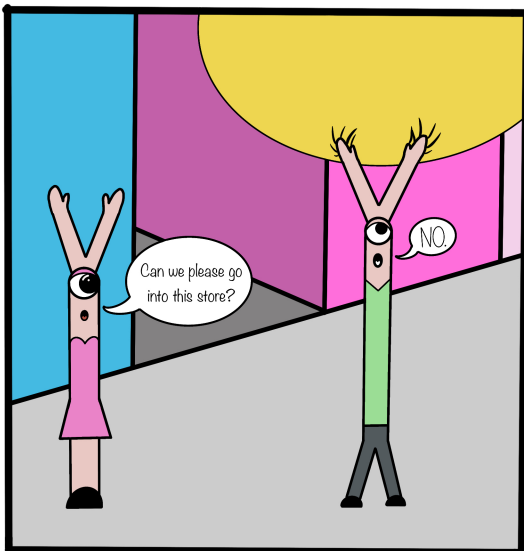
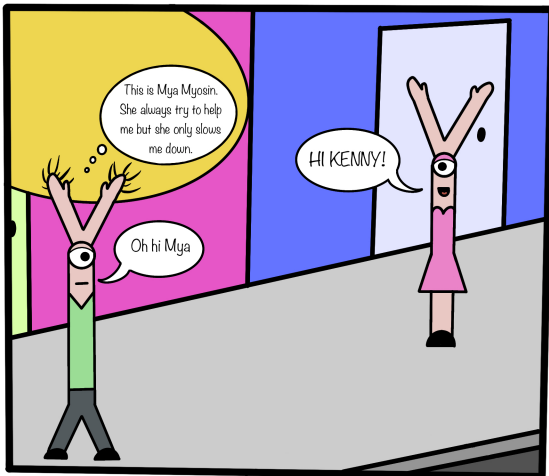
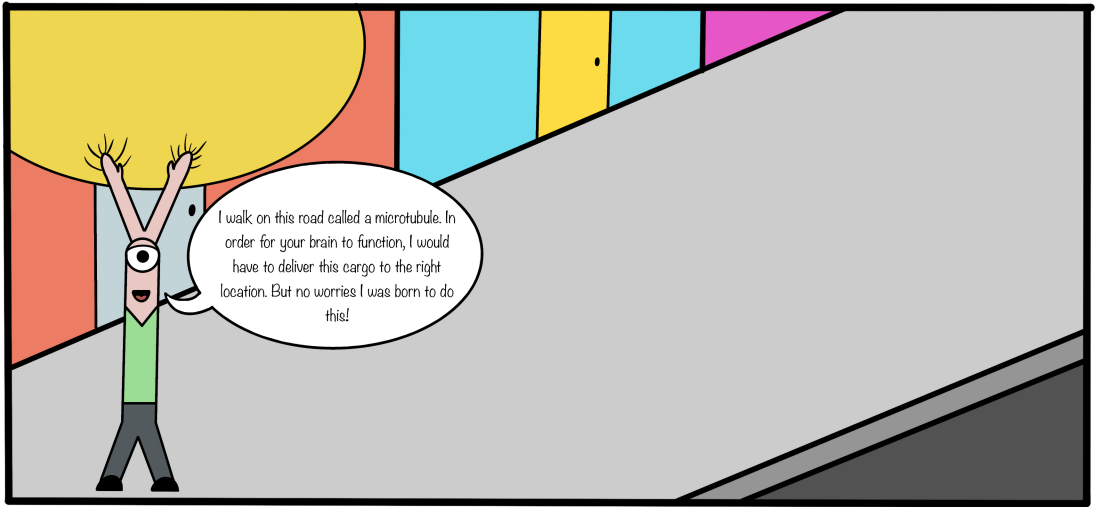
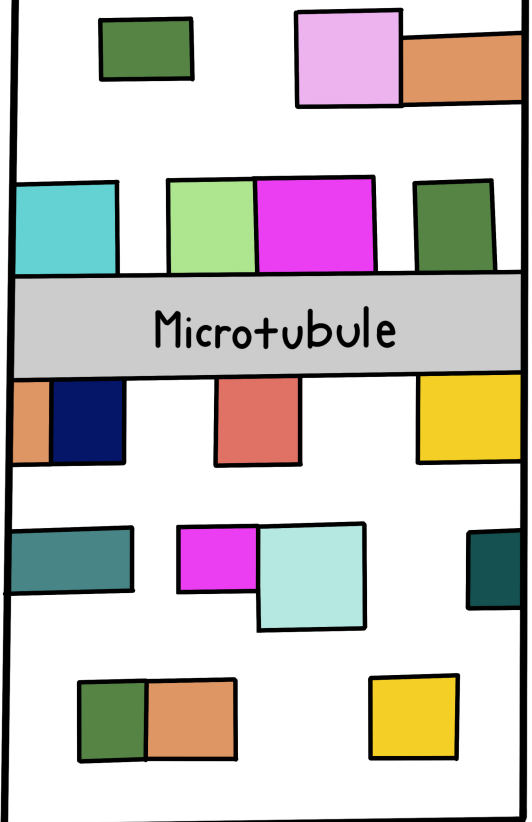


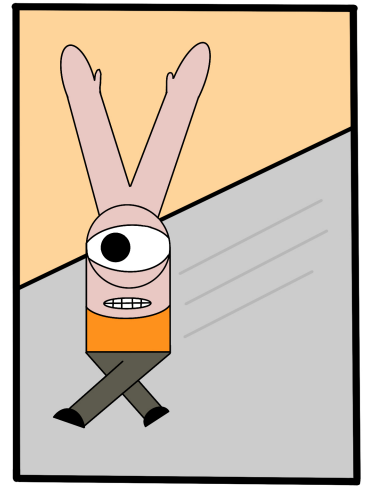
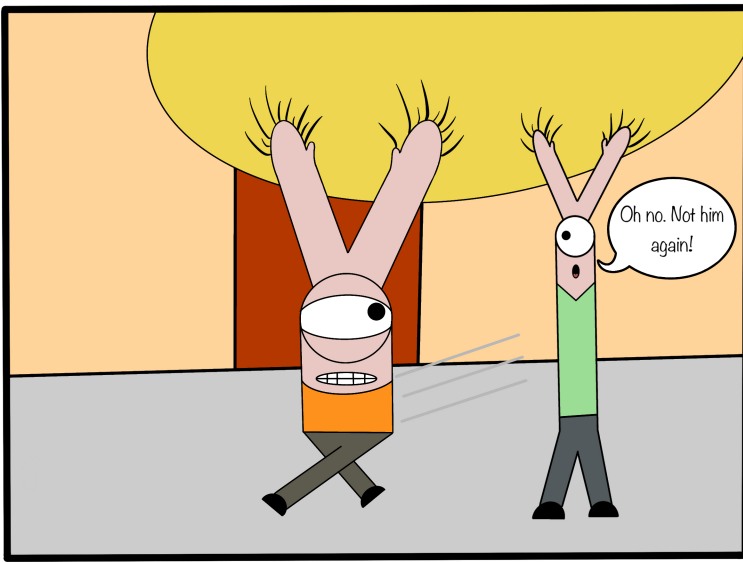
Journey to the Presynaptic Axon



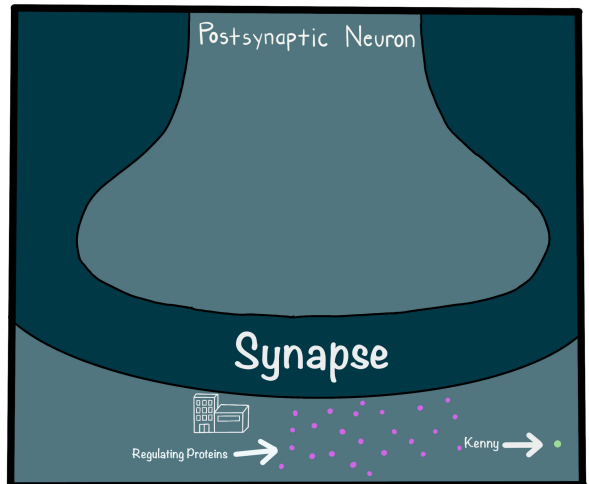
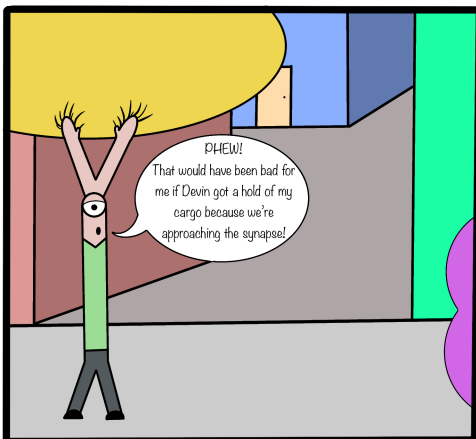
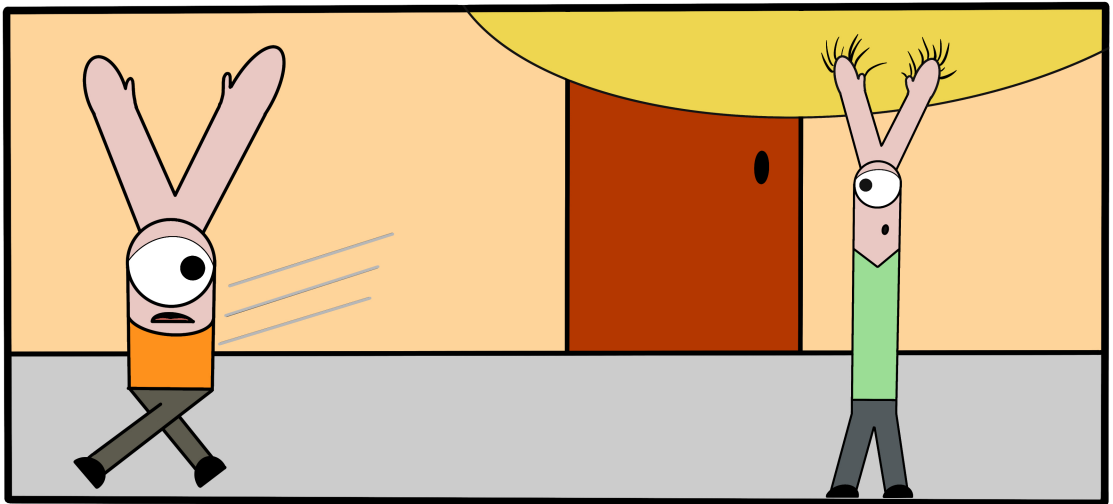


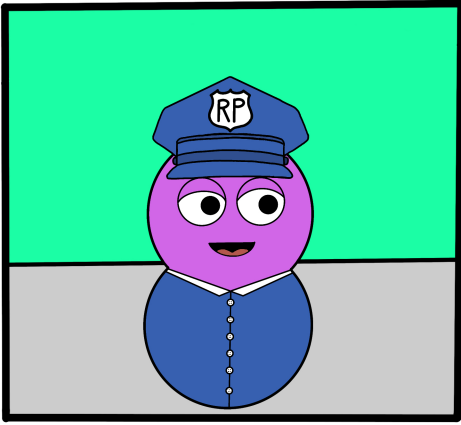
Along the microtubule are stores called **actin**, and Mya loves to go into these stores. She always tries to drag Kenny into these stores which makes his journey to deliver his cargo difficult.



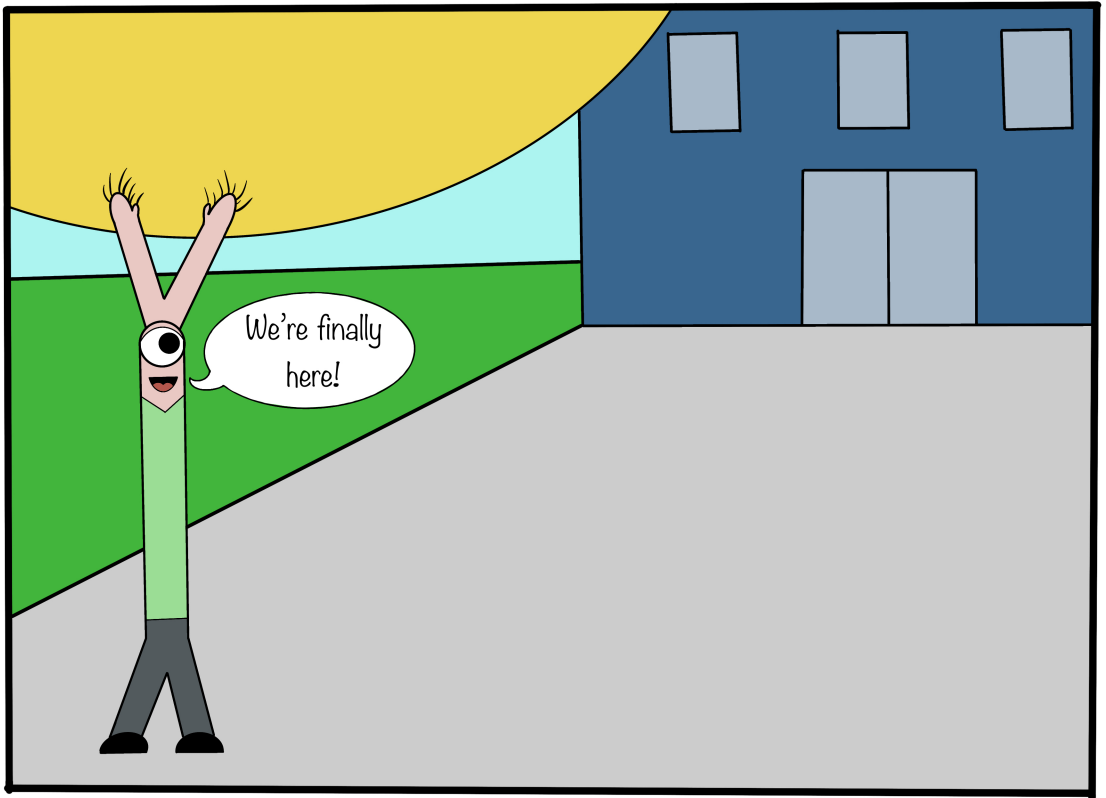


Devin Dynein is also a motor protein but he can only walk the opposite direction of Kenny Kinesin which is back towards the center of the cell. Kenny has to win this game of tug of war in order to deliver his cargo.





Regulating proteins are essentially traffic police that ensures all passing traffic gets to the right location. If the synapse needs Kenny's cargo, Mya Myosin will take it. However, Kenny's cargo only has to go to the axon tip today.



The End